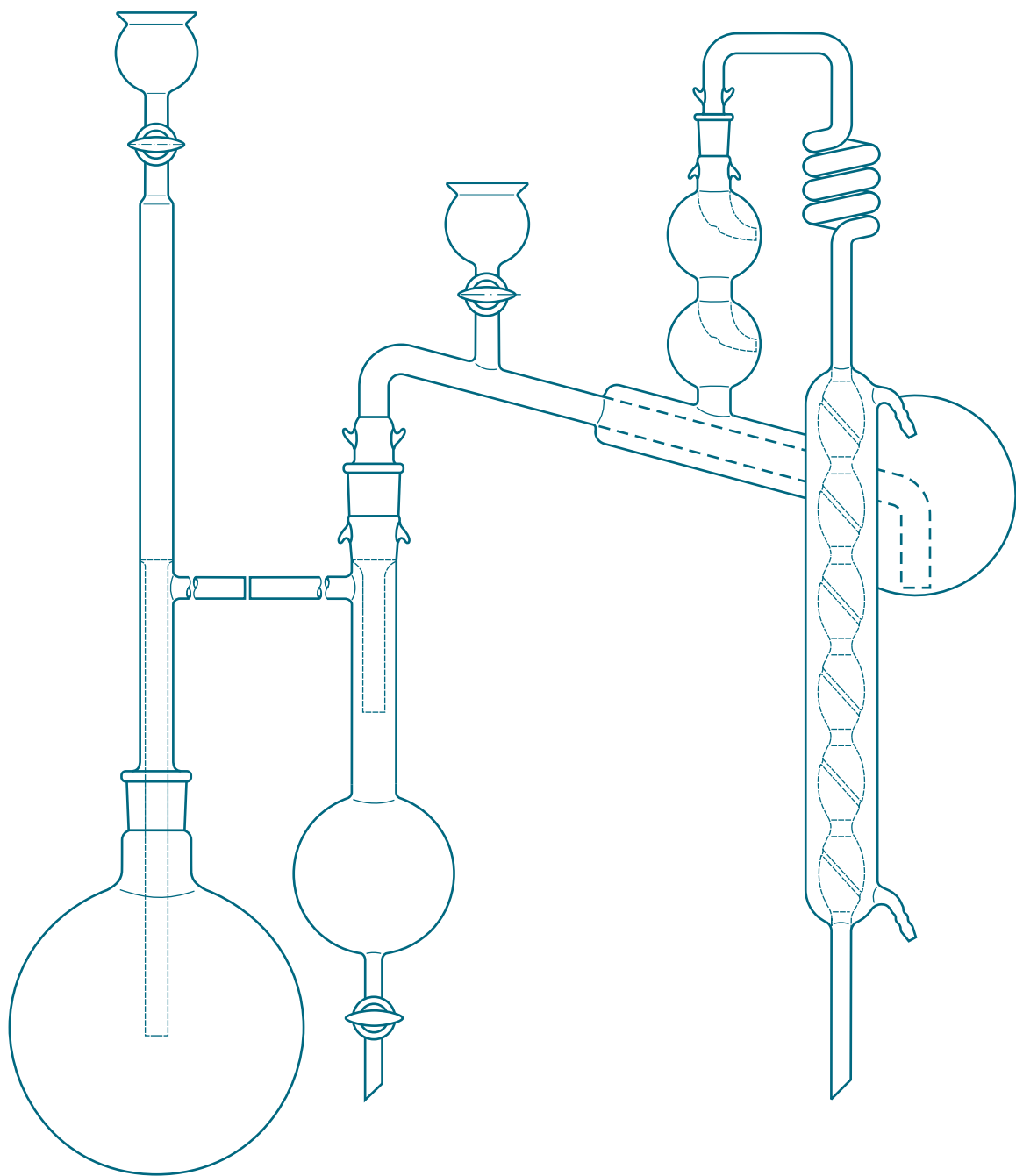




COMPANY PROFILE

Adrian Sistem Glassware, a producer of high-quality laboratory glassware, also serves as the technical foundation for the luxurious Gabriela Seres brand. Combining technical expertise with artistic vision, Gabriela Seres handcrafts unique borosilicate glass pieces that have gained global recognition among luxury connoisseurs. These luxury pieces are crafted by skilled artisans in Romania, showcasing the country's rich tradition in glassmaking.



Introduction

Adrian Sistem Glassware manufactures and markets laboratory glassware manufactured by using the burner and blowing technology of thermoresistant glass tubes. The company's professional experience is great, since some of the company's staff worked before 1992 in a state-owned factory producing similar product groups.

The raw material for making laboratory glassware is borosilicate 3.3 thermoresistant glass, the composition and properties of which are defined by the ISO 3585 standard. Due to its high chemical stability, low expansion coefficient and thermal shock resistance, this glass is the ideal material for the manufacture of glassware Laboratory.

We only use borosilicate glass tubes are produced in the world's most famous companies, Kavalier Glass (Simax) and Schott (Duran).

The company's specialists are always receptive to customer requests as well as to technical novelties in the field of glassware produced using this technology.

Gabriela Seres - high end decorative glass design

Beside laboratory glassware, our company also launched the decorative glassware brand with original designs by Gabriela Seres.

Gabriela Seres is a luxury glassware brand founded in 2012, known for its elegant and unique handcrafted pieces made of borosilicate glass. The brand is the result of the creative collaboration between Gabriela Seres, a self-taught artist and designer, and her master glassblower husband, who is the technical mastermind and developer behind her designs. The combination of Gabriela's artistic vision and her husband's technical expertise has resulted in an exceptional collection of functional and decorative glassware pieces, crafted by skilled artisans in Romania, and appreciated by luxury connoisseurs worldwide.

1992 - 2022 celebrating 30 years

October 1992

The company is founded by Petru Stefanescu (master glassblower) and Eng. Gabriela Stefanescu (engineer in the chemistry of silicates)

January 1994

The company starts its activity with 3 glassmakers and the master glassmaker working side by side with them in an old house in the Popa Nan area of Bucharest.

June 1995

The company is growing and rents a larger space within the "National Glass Institute" on Theodor Pallady Blvd. in Bucharest

September 1998

First participation with stand at an international fair - MACEF Milan Italy

Septembrie 2001

First participation with stand at the international decoration fair Tendence - Messe Frankfurt Germany

February 2002

First participation with stand at the international decoration fair - Environment - Messe Frankfurt Germany

June 2005

Implementation and obtaining the ISO 9001 quality certification

July 2007

Finalized the purchase of the space in which the company has been active for over 12 years at 47 Theodor Pallady

May 2009

Prima participare cu stand la ACHEMA - Messe Frankfurt Germania

September 2019

The launch of the Gabriela Seres brand at the Maison et Objet exhibition in Paris

April 2014

First participation with stand at the international fair ANALYTICA Messe München Germany

June 2018

First stand participation at ACHEMA exhibition - Messe Frankfurt Germany.

January 2021

Coronavirus pandemic - crisis management and overcoming it successfully

October 2022

*The company celebrates **30 years** of activity. Hope to have many more to come alongside our family of employees and our longstanding partners.*



At 30 years

Thirty years ago, Petru and Gabriela Stefanescu set out to do something different in a country with an uncertain present and future. They wanted to create a different future for themselves, family, their employees and their families. They analyzed their abilities: mastery in glassmaking, advanced technological knowledge, attention to detail, seriousness, closeness to people and interest in helping professionals in laboratories with quality glassware. They also analyzed things they didn't know: accounting, management, living in a country in transition from communism to capitalism, and how to do most things in a company.

They have worked hard year after year working to develop and keep close quality people. The company has grown organically, attracting more and more interested and satisfied customers. The development took place over time, reaching at one point 40 employees. Since then, the talents have filtered and only the best and most specialized remain. These professionals carried on the tradition of laboratory and decorative glassware through the joy they get from creating special products of high technicality for the Romanian and foreign market.

Adrian Sistem is a second generation family business in full capacity development and product development. The company has stable partners and manages to reach as many laboratories and houses as possible through a pure passion for glassmaking.

Personally, I want to continue the excellence in blowing Romanian borosilicate glass and to make proud those who have founded this company for 30 years and have practiced this profession for the last 60 years.

Happy birthday!

*Adrian Stefanescu
CEO*

Mastery and technique

In laboratory glassware, the one who practices it needs to prove his mastery and high technical knowledge. The glassmaker who makes laboratory glassware has few degrees of freedom when it comes to his products. They have low performance tolerances, often below 1mm.

Although the execution is manual, it must be as high quality and accurate as possible. Our glassmakers always work subtly and according to the technical drawings. They contain the most important details for making the parts as close as possible to the users' needs. In many cases, these glass parts are inserted into machines made of metal or plastic made of automatic machines with very low tolerances. Our glassmakers manage through mastery and technicality to be able to include their finished product in such a car.

The blower's self-quality-control is the most important in making high quality products with a very small number of scraps.

Years of training and work in an environment where quality has always been first place have made these glass craftsmen true technologists who understand what they have to do from a simple technical sketch or a physical model.





Manufacturing

The manufacturing of laboratory glassware is defined by the parameters given by our customers. Their execution is done in very well developed conditions according to a rigorous production preparation. The preparation includes the manufacture of graphite tools, cast iron, special pliers, cast iron molds, lathe tools and much more. All these are made in our own mechanical workshop, but also in specialized mechanical centers that have lathes and CNC milling cutters.

Production planning is generated by the production manager, together with the team leader. For composite products, in which several glassmakers are working on in order to be completed, the planning always takes into account their synchronization.

Communication is very important and without it you can not achieve high results. Every day, for a good synchronization of the glassmakers and of the production, ad-hoc meetings are held in which the daily and subsequent responsibilities are discussed. Because it is a productive process, it also has a creative component that completely captures the attention of glassmakers. For this reason, permanent communication about the objectives of production, quality and organization are very important.

Large products

Our company has specialized over time to produce larger and more complex parts. These cannot be made by hand and require special glass lathes, along with larger glassblowing torches for more intense heating and melting.

The parts worked on the lathe have a much more exact centricity than the ones made by hand. For those parts where a special centering is required, such as condensers used in electronic devices, the lathe is the only way to make them.

The development of large products is a particularly important part of laboratory glassware. Reactors with single, double, triple walls, condensers for pilot stations, flanges, extractors with flange and others, require large diameters and high precision of execution. The work on a lathe is 100% manual, the parts only being held by the lathe when they are formed by the glassblower.

The technique needed to work laboratory glassware on the lathe is of a high degree, requiring extra-specialization and dedication.





Custom Made Products

Our extensive experience and the ability to complete complex and short-range laboratory equipment gives you the advantage of working on your design and specifications. Send us your drawing and one of Adrian Sistem Glassware team members will send you the specific offer.

ACHEMA FRANKFURT 2018



International Exhibitions - ACHEMA

Adrian Sistem Glassware participated in several editions of ACHEMA Frankfurt, the most important international fair for chemistry, laboratory processes, chemical processes, etc. The last edition that could be physically attended was in 2018 before the COVID-19 pandemic.

In 2018 we participated with a stand in hall 4.1, where we brought the best and most important laboratory glassware achievements of the company: water distillers, fractional distillation columns, flange Soxhlet machines, single, double and triple wall reactors and glassware kits for schools with Rodaviss-type jointed glassware.

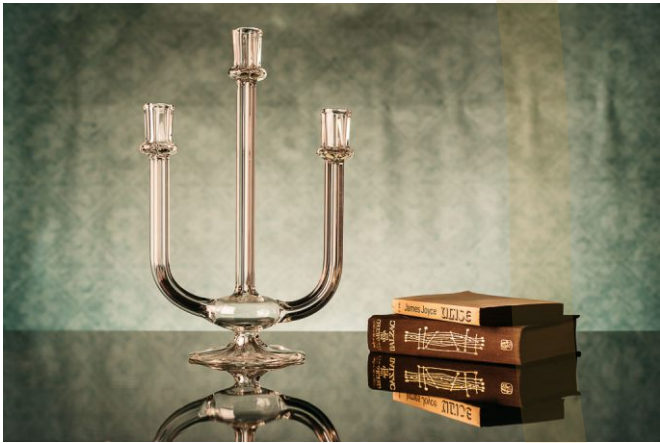
GS AMBIENTE 2020 - Gabriela Seres

Sustaining its tradition of participating in Frankfurt at Ambiente - the leading consumer goods trade fair that sets the trends in interior design, Gabriela Seres exhibited the beautiful products part of a new collection that impressed the audience in Germany.

The fair marks a cornerstone every year as the biggest producers in consumer goods gather to showcase their creations and set the upcoming trends. At the same time, Ambiente has become an important point of meeting for many businesses, marked by the long history of the event that today gathers 4,441 exhibitors along with 134,600 visitors. Being part of this exhibition for such a long time comes as a statement for Gabriela Seres in the glassware market.



Gabriela Seres Best Of







CERTIFICATE



This is to certify that

Adrian Sistem SRL

Bulevardul Theodor Pallady nr. 47
032258 Bucuresti
Romania

has implemented and maintains a **Quality Management System**.

Scope:

Design, production and marketing of glass products for laboratory, decorative glasware and lighting fixtures glass

Through an audit, documented in a report, it was verified that the management system fulfills the requirements of the following standard:

ISO 9001 : 2015

Certificate registration no. 297036 QM15
Valid from 2021-07-05
Valid until 2024-07-04
Date of certification 2021-07-05



DQS GmbH

Markus Bleher
Managing Director

Accredited Body: DQS GmbH, August-Schanz-Straße 21, 60433 Frankfurt am Main, Germany
Administrative Office: DQS Romania, Str. Bratului nr. 11, 020565 Bucharest - Romania

Vision Statement

At *Adrian Sistem* we believe in the power of sustainable manufacturing and help to sustain laboratory activities for the benefit of the partnership with our customers. Our company promotes qualitative, high complexity laboratory glassware that are used in a significant number of laboratories activating in different domains.

Mission Statement

Our mission is to support laboratory companies provide products and services of high quality for their end customers.

Values

We believe in treating our customers and employees with respect and fairness. We also believe in honesty, integrity and business ethics as well. The satisfaction of our customers is our most important goal and we are dedicated to provide them the best solutions according to their requirements and expectations.

Business Goals and Objectives

To become provider of laboratory glassware for a larger spectrum of companies in Europe and around the world. To maintain and improve our quality standards to reach higher performance.

Business Strategy

Achieve growth through the acquisition of manufacturing equipment by increasing our productivity. Diversification of the line of products and the industries served. Start serving new markets. Permanently improve our sales policy in order to offer our clients with more advantageous and competitive pricing. To continue the tradition of glass blowing through the recruitment and training of young employees.

Business concept

Adrian Sistem is a manufacturer of laboratory glassware produced by the glass blowing technique and provider of complex high value products at a competitive price to partners in the European and in the internal Romanian market.

Business Competitiveness

Our know-how and the experience accumulated in over 25 years grant us an important advantage. Also the positioning of our company in the capital of Romania, Bucharest, confers the advantage of a good distribution and cooperation with neighboring Eastern European countries.

Business, Administrative & Contact Information

Business Name: Adrian Sistem SRL

Business Type: Private Company

Company Registration Number: J40/26165/1992

VAT Number: RO3378630

Telephone: +40 21 3451002

Fax: +40 21 3450850

E-mail: office@adriansistem.ro

Mobile: +40 755129860

Address: 47 Theodor Pallady Bvd., sector 3,
032258, Bucharest, Romania

Banking Details:

Bank: BRD - GROUPE SOCIETE GENERALE

Branch: BRD POLICOLOR

Account Number: RO85BRDE441SV14131814410

General Manager
Petru-Ioan Stefanescu

Executive Manager
Adrian Stefanescu
Tel. +40 755129863
e-mail. adrian@adriansistem.com

